

# VULCAN

## BIOWORKS

Our single-use rigid dip tube is designed to simplify the manufacturing of biopharmaceuticals and medicines. Made from biocompatible PETG, it meets all FDA requirements and provides superior performance for accurate dosing and filling.



## SINGLE-USE RIGID DIP TUBE

### for Biopharmaceutical Manufacturing

#### FEATURES

- Rigid construction for easy manipulation and control during the manufacturing process
- Ergonomic for controlled usage, promoting accurate dosing or efficient egress operations
- Structural design for operator accuracy and reduced errors
- Customizable lengths can provide greater flexibility in the manufacturing process, allowing for optimized usage in different container sizes
- Porous polymeric filters can be installed into the proximal or distal ends of the Rigid Dip Tube as needed

#### BENEFITS

- Improved efficiency for streamlined manufacturing processes and cost savings
- Better quality control for consistent dosing and high-quality products
- Enhanced safety with biocompatible PETG material that meets all FDA requirements
- Biocompatibility, transparency, chemical resistance, good mechanical properties, and single-use compatibility.

#### SPECIFICATIONS

**Material:** Biocompatible PETG

**Sterilization method:** Gamma irradiation

**Material:** Biocompatible PETG

**Sterilization method:** Gamma irradiation



#### REGULATORY

##### REGULATION

USP  
FDA Compliance  
RoHS  
REACH  
DFARS  
Country of Origin  
USMCA Qualifying  
Schedule B  
ECCN

##### DETAIL

Class VI  
21 CFR 177.1315  
RoHS 3 (2015/863/EU) Compliant  
REACH (EC 1907/2006) (07/08/2021, 219SVHC) Compliant  
Specialty Metals COTS-Exempt  
United States  
No  
391721.0000  
EAR99

INFO@VULCANBIOWORKS.COM | VULCANBIOWORKS.COM

The information contained in this document is the sole property of Vulcan Bioworks and is protected by proprietary rights. This document is provided for informational purposes only and is not intended for distribution, reproduction, or any other unauthorized use.





# AVAILABLE SIZES

## Straight Configuration

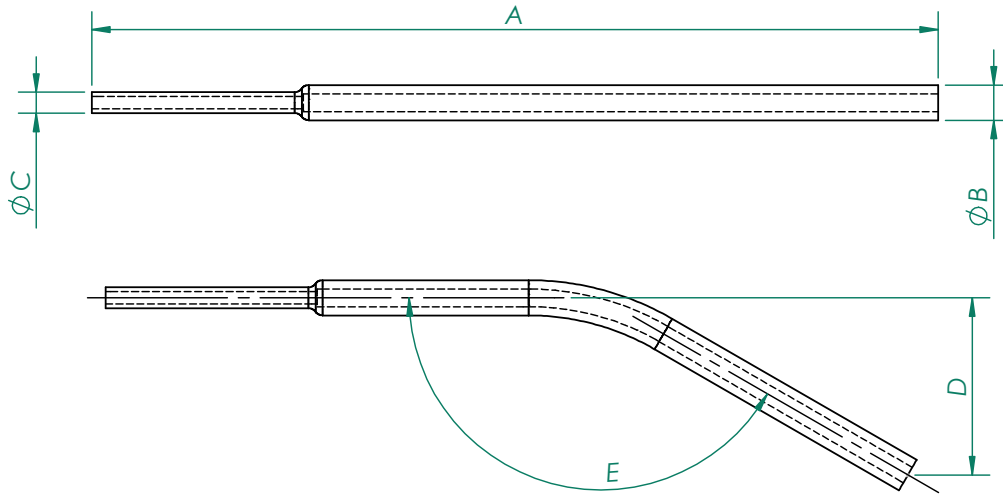


Nominal Length	OD	Wall Thickness	Nominal Tubing Size
6	0.375"	1/16"	3/8"
12	0.5"	1/16" or 1/4"	1/2"
18	0.625"	1/16"	5/8"

## Bent Configuration



Nominal Length	Bend Angel	OD	Wall Thickness	Nominal Tubing Size
6	30	0.375"	1/16"	3/8"
12	30	0.5"	1/16" or 1/4"	1/2"
18	30	0.625"	1/16"	5/8"



## HOW TO USE

1. Attach the Rigid Dip Tube to any tubing using standard connections
2. Configurations can be Include to any Single-Use Assembly, as warranted
3. Insert Rigid Dip Tube into the container to be filled or emptied
4. Position Rigid Dip Tube as desired to minimize hold up volume or to dosing accuracy
5. Discard the single-use Rigid Dip Tube after use

## CONTACT US TODAY

To learn more and start using our dip tube in your manufacturing process.